

Wholesale.. We have it covered!

However way your business is structured today or in the future, Tyreman have it covered. Whether you are a small independent with aspirations to grow or an international, multi-depot organisation, our new Tyreman v12 is scalable to fit your business needs now, and well into the future.

Online B2B option provides ease of ordering for your customers and helps increase your sales.

Introducing Tyreman v12

Tyreman v12 is the next generation of real world automotive solutions.

Tyreman have been working hard to deliver what the market has been looking for.

Our solutions are fully interoperable with new features and latest technologies that are available not only now, but well into the future.

So if you are interested in improving your margins today, then **Tyreman v12** is your logical choice.

Modern User Interface.



Tyreman v12 helps present a modern look to your company and instils confidence in your customers.

Wholesale Features

An invaluable aid to help increase your profits

Multi-Company & Multi Branch system

Internet B2B option

Dedicated Wholesale Module

Quotations and held orders

Lost sales with reports

Picking lists

Delivery Run allocation & Analysis

Collection notes & Pro-forma Invoices

Print single Invoice or batch by run number

Flexible Customer Pricing and Discounts

Customer Transaction History

Hold back orders for customers

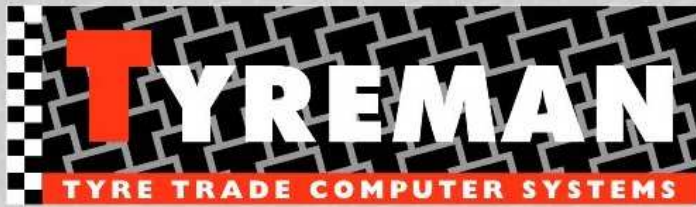
Hold back orders from suppliers

Allocate back orders from goods received

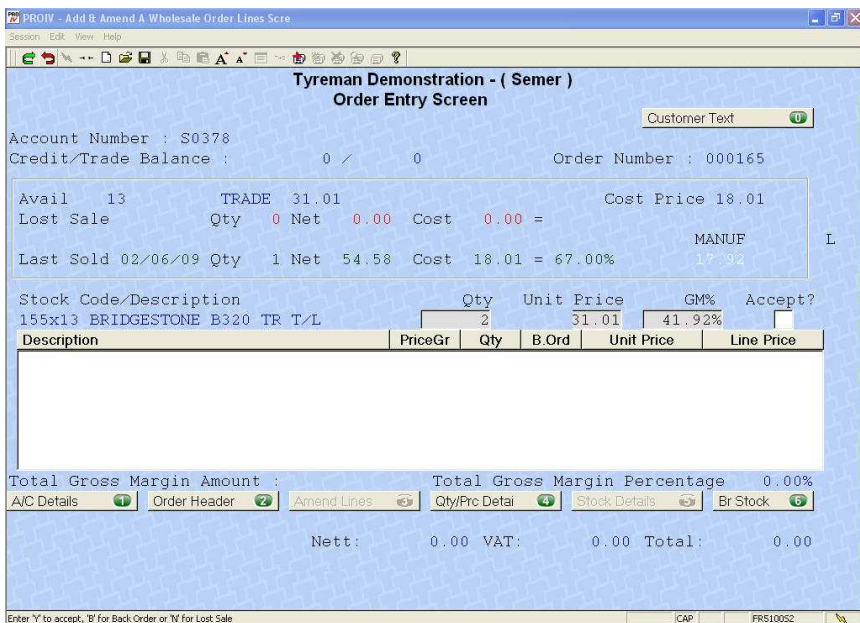
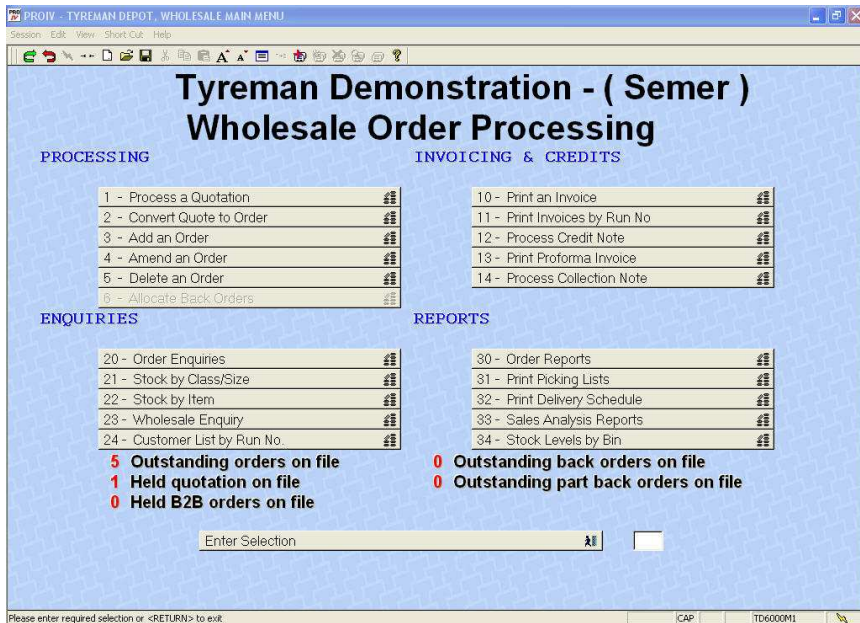
Full Credit Control Financial Ledgers as Standard

Inbuilt Security System

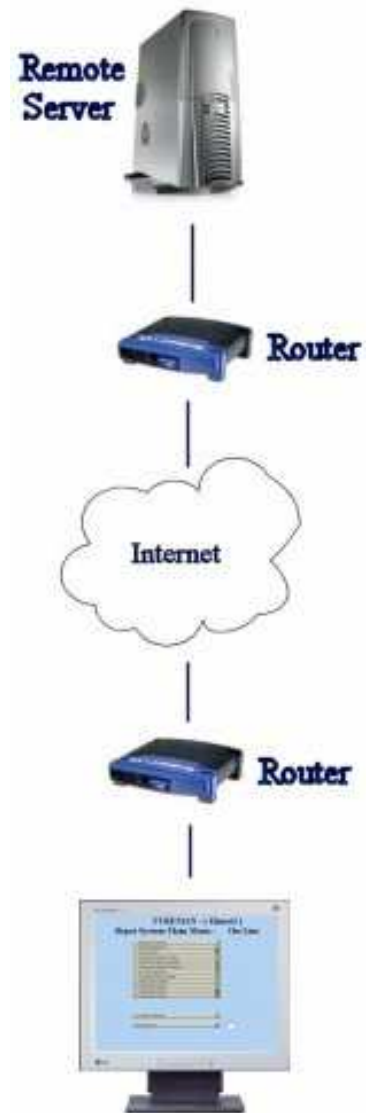
Tyre Industry Specialists



Screen shots.



The optional hosted service provides low start up costs and easy expansion possibilities.



Contact Information

If you have any questions, please contact us at:

Tyreman
Semer House
Semer Business Park
Semer, Suffolk
IP7 6JB

Telephone: 0870 050 2500
Facsimile: 0870 124 9547
Email: info@tyreman.co.uk

**** View our website <http://www.tyreman.co.uk> for more information ****